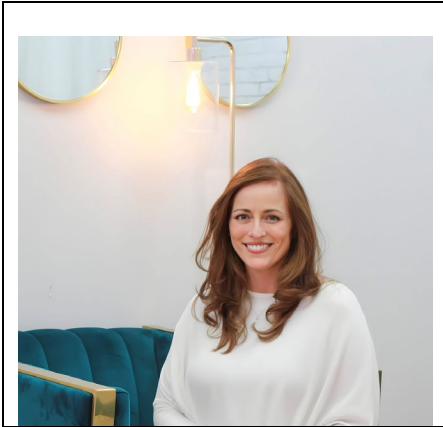




Faculty Biography Form

Hispanic/Latina Women in Medicine: Critical Needs for Empowerment and Transformation in Practice 2024

September 13-15, 2024



Tisha Lunsford, MD
Director of Motility
Mayo Clinic

Specialties: Gastroenterology/Motility

Dr. Lunsford is a clinical gastroenterologist and the Director of Motility at Mayo Clinic Arizona with research interest and expertise in disorders of gut-brain interaction and GI motility disturbances such as IBS, functional dyspepsia, fecal incontinence, gastroparesis and nonmotor symptoms associated with neurological disorders. She has unique experience with integrating shared decision making and individual patient care goals into treatment algorithms that also include collaboration with a multidisciplinary care team comprised of amazing and dedicated nurse educators, physical therapists, GI clinical health psychologists, pharmacists, and dietitians. She is passionate about patient and provider education, encouragement, and empowerment.